



System and Farm Benchmarking

for

Genesis

September 2, 2006

340 Farms and 612,722 Females

Swine Management Services, LLC

1044 W. 23rd St. Suite B Fremont, NE 68025

Tel: (402) 727-6600 Fax: (402) 727-7270

Ron T. Ketchem www.swinems.com Mark D. Rix

Swine Smart Production and Financial Analysis Software
designed to provide "*information solutions to the swine industry*"

Benchmarking - Statistical Process Control Charts - Individual Farm Targets - Statistical Analysis - Web Based Reporting

Swine Smart doesn't just provide information, it provides answers. Think of it as the provider of a "Stock Summary" for your swine portfolio to your Board of Directors.

Swine Smart has a few basic operating principles to help the information flow on your operation or system.

- * Provide timely information
- * Accuracy and attention to detail
- * Boil down records to focus on nine (9) Key Performance Indicators (KPI)
- * Work as partners to use information for production and financial decisions
- * Hands on approach to records analysis - our analysts take the time to look at and analyze your records

The calculations, estimates, projections and results embodied in this analysis are derived from data and other information provided by the producer. Neither Swine Management Services, LLC nor any of their subsidiaries or affiliates warrants



Swine Management Services, LLC

System Benchmarking

52 Week Performance Ranked by Pigs Weaned / Mated Female / Year Sep 02, 2006 340 Farms and 612,722 Females

Farm Name	Average Mated Female Inventory	Pigs weaned / mated female / year	Litters / mated female / year	Wean 1st Service Interval	Farrowing rate	Farrowing interval	Total born / litter	Born live / litter	Weaned / litter farrowed	Pre-Weaning Mortality	Pre-Weaning Survival	Weaning age	Average Parity	Mated Female Death Loss
SMS Average Top 10%	28,615	26.85	2.50	5.93	88.5%	147.7	13.12	12.02	10.71	9.8%	84.1%	19.15	2.59	6.1%
SMS Average Top 25%	111,907	25.34	2.45	6.65	85.8%	145.0	12.69	11.62	10.32	10.8%	82.7%	18.62	2.23	6.6%
SMS Average Top 50%	287,255	24.07	2.42	6.64	84.8%	144.6	12.34	11.28	9.96	11.0%	82.4%	18.61	2.09	8.1%
SMS Average All	581,705	22.29	2.36	6.93	82.3%	145.1	12.10	10.96	9.51	13.0%	79.8%	18.71	2.18	9.1%
SMS Average Bottom 50%	294,450	20.56	2.30	7.23	79.9%	145.6	11.85	10.64	9.05	15.2%	76.9%	18.82	2.27	10.1%
SMS Average Bottom 25%	107,737	18.59	2.15	8.21	75.7%	148.1	11.74	10.52	8.90	16.6%	75.4%	18.48	1.76	10.4%

Genesis - 28 Farms

Average Top 10%	1,304	29.17	2.56	5.79	92.4%	143.7	13.42	12.36	11.46	7.3%	88.1%	21.49	2.66	3.2%
Average Top 25%	3,802	28.37	2.52	5.73	91.0%	144.8	13.45	12.38	10.83	8.8%	85.7%	19.98	2.59	3.0%
Average Top 50%	9,718	27.52	2.52	5.79	89.9%	144.3	13.26	12.12	10.92	8.7%	85.1%	20.05	2.83	4.7%
Average All	24,021	26.19	2.47	6.44	88.1%	144.4	12.97	11.88	10.57	9.9%	83.9%	19.61	2.84	5.7%
Average Bottom 50%	14,302	25.28	2.44	6.89	86.8%	144.5	12.78	11.71	10.34	10.7%	83.0%	19.31	2.84	6.4%
Average Bottom 25%	6,489	24.76	2.40	6.55	85.4%	144.2	12.77	11.78	10.35	11.3%	82.5%	19.86	2.80	6.4%

13 Week Performance Ranked by Pigs Weaned / Mated Female / Year Sep 02, 2006 313 Farms and 557,997 Females

Farm Name	Average Mated Female Inventory	Pigs weaned / mated female / year	Litters / mated female / year	Wean 1st Service Interval	Farrowing rate	Farrowing interval	Total born / litter	Born live / litter	Weaned / litter farrowed	Pre-Weaning Mortality	Pre-Weaning Survival	Weaning age	Average Parity	Mated Female Death Loss
SMS Average Top 10%	44,126	26.99	2.49	6.08	87.7%	143.2	13.09	11.99	10.74	9.4%	84.1%	19.55	2.15	6.1%
SMS Average Top 25%	130,042	25.75	2.45	6.51	86.8%	142.9	12.81	11.70	10.40	10.5%	82.9%	18.85	1.84	7.5%
SMS Average Top 50%	268,826	24.75	2.43	6.75	85.5%	143.3	12.54	11.43	10.12	11.2%	81.9%	18.63	2.00	8.2%
SMS Average All	529,767	22.67	2.36	7.29	82.4%	144.2	12.20	11.05	9.62	12.7%	80.0%	18.61	2.08	9.4%
SMS Average Bottom 50%	260,941	20.54	2.28	7.88	79.2%	145.4	11.83	10.63	9.07	14.6%	77.7%	18.57	2.16	10.6%
SMS Average Bottom 25%	99,648	18.26	2.14	8.75	75.8%	146.9	11.74	10.45	8.73	17.3%	74.6%	18.48	1.99	11.2%

Genesis - 28 Farms

Average Top 10%	2,777	29.34	2.57	5.11	92.1%	142.1	13.86	12.63	11.12	8.3%	85.4%	19.47	2.99	6.4%
Average Top 25%	5,062	28.98	2.54	5.60	91.5%	142.7	13.70	12.49	11.03	8.2%	85.7%	20.08	2.79	4.4%
Average Top 50%	9,177	28.27	2.51	5.77	90.0%	143.3	13.49	12.27	11.05	8.1%	85.7%	20.72	2.91	4.9%
Average All	24,204	26.66	2.48	6.43	88.5%	143.7	13.15	11.98	10.68	10.0%	83.5%	19.94	2.84	6.1%
Average Bottom 50%	15,027	25.68	2.46	6.83	87.6%	143.9	12.94	11.80	10.45	11.1%	82.2%	19.46	2.79	6.9%
Average Bottom 25%	7,584	25.08	2.44	6.80	87.0%	143.7	13.01	11.87	10.45	11.9%	81.4%	20.01	2.62	7.7%

52 Week - Sep 02, 2006 - Farm Rank (top number is Genesis - 28 Farms Rank/Percentile and bottom number is SMS Rank/Percentile out of 340 farms)

	Farm Name	Average Mated Female Inventory	Percentile	Pigs weaned / mated female / year	Percentile	Litters / mated female / year	Percentile	Wean 1st Service Interval	Percentile	Farrowing rate	Percentile	Farrowing interval	Percentile	Total born / litter	Percentile	Born live / litter	Percentile	Weaned / litter farrowed	Percentile	Pre-Weaning Mortality	Percentile	Pre-Weaning Survival	Percentile	Weaning age	Percentile	Average Parity	Percentile	Mated Female Death Loss	Percentile
1	Prairiehome Colony	443	22%	29.51	100%	2.52	78%	5.44	22%	90.9%	81%	144.8	41%	13.72	93%	12.69	100%	11.82	100%	7.0%	89%	88.9%	96%	22.85	96%	2.69	56%	5.2%	52%
1			14%		100%		96%		11%		97%		45%		99%		99%		100%		97%	99%	99%		98%		64%	27%	
2	Suncrest Colony	501	26%	29.11	96%	2.57	89%	6.00	41%	92.8%	93%	142.8	89%	13.42	85%	12.53	93%	11.36	96%	9.7%	48%	85.5%	56%	21.20	78%	2.71	63%	2.2%	7%
2			17%		100%		98%		24%		99%		76%		96%		98%		100%		9%	89%	99%		91%		54%	7%	
3	Camrose	361	11%	28.84	93%	2.58	96%	5.92	33%	93.6%	100%	143.7	67%	13.04	44%	11.71	19%	11.16	85%	4.4%	100%	90.7%	100%	20.23	52%	2.56	37%	2.2%	11%
3			10%		99%		99%		23%		99%		62%		89%		85%		98%		2%	99%	99%		81%		54%	7%	
4	Bluegrass Colony	557	37%	28.37	89%	2.52	74%	5.51	26%	90.6%	78%	143.1	85%	13.20	63%	12.44	89%	11.25	93%	9.0%	59%	86.8%	74%	20.93	74%	3.03	78%	3.1%	22%
4			19%		99%		95%		11%		96%		71%		93%		97%		99%		6%	94%	90%		90%		79%	11%	
5	Woodland Colony	889	63%	27.90	85%	2.47	52%	5.30	11%	88.8%	44%	142.1	96%	13.45	89%	12.38	81%	10.40	30%	8.1%	74%	86.0%	67%	17.20	0%	2.37	7%	3.6%	30%
5			36%		99%		87%		7%		91%		82%		96%		96%		89%		4%	86%	92%		22%		42%	16%	
6	Milltown Colony	732	52%	27.76	81%	2.53	85%	6.20	59%	90.5%	74%	151.9	0%	13.80	100%	12.56	96%	9.85	0%	12.8%	4%	80.1%	15%	20.00	44%	2.42	19%	2.2%	4%
6			30%		98%		97%		32%		96%		6%		99%		99%		69%		22%	88%	44%		77%		47%	6%	
7	Glidden Colony	320	0%	27.75	78%	2.53	81%	6.02	52%	92.9%	96%	143.5	70%	13.16	59%	11.99	63%	10.94	67%	7.5%	85%	86.2%	70%	19.84	41%	2.60	44%	1.6%	0%
7			8%		98%		97%		26%		99%		64%		91%		92%		96%		3%	92%	92%		74%		59%	6%	
8	Evergreen Colony	675	48%	27.60	74%	2.50	67%	5.96	37%	89.7%	59%	143.9	56%	12.87	26%	11.83	37%	10.97	74%	6.7%	93%	87.8%	89%	20.23	56%	2.53	33%	2.7%	15%
8			28%		97%		93%		23%		94%		59%		85%		88%		97%		2%	87%	97%		82%		52%	9%	
9	Clearview Weanlings	1,390	85%	27.60	70%	2.57	93%	5.28	7%	89.8%	63%	143.2	74%	13.38	81%	12.24	74%	10.88	63%	9.2%	56%	84.4%	52%	18.95	22%	3.50	96%	5.6%	67%
9			54%		97%		99%		6%		94%		95%		96%		96%		96%		7%	85%	60%		94%		30%		
10	Fairhaven Colony	337	7%	27.09	67%	2.42	22%	5.16	0%	89.0%	48%	146.4	11%	13.32	70%	12.32	78%	11.16	89%	8.5%	63%	85.8%	63%	21.70	85%	2.39	15%	3.9%	33%
10			9%		96%		71%		6%		91%		29%		94%		96%		98%		5%	91%	94%		94%		44%	17%	
11	O K Colony	587	44%	27.02	63%	2.45	30%	7.22	85%	89.2%	56%	146.9	8%	13.33	74%	11.85	44%	11.08	78%	6.5%	96%	86.9%	81%	20.92	70%	2.38	11%	4.8%	48%
11			22%		95%		82%		60%		93%		25%		95%		89%		98%		2%	94%	89%		89%		44%	23%	
12	Brentwood East	1,511	93%	26.76	59%	2.49	59%	5.90	30%	87.5%	26%	143.8	63%	12.99	37%	11.86	48%	10.95	70%	8.0%	78%	85.8%	59%	20.40	59%	3.46	89%	6.6%	81%
12			60%		94%		89%		21%		84%		60%		88%		90%		96%		4%	91%	84%		93%		93%	40%	
13	Elm Spring Colony	416	19%	26.64	56%	2.48	56%	5.22	4%	87.6%	30%	145.5	26%	12.63	15%	11.62	15%	10.67	48%	8.4%	70%	86.9%	78%	22.37	93%	2.88	70%	4.1%	37%
13			12%		94%		89%		6%		85%		37%		79%		82%		93%		5%	94%	96%		94%		75%	18%	
14	Sunset Colony	1,001	67%	26.10	52%	2.59	100%	6.00	41%	91.3%	85%	142.5	93%	13.22	67%	11.83	33%	11.15	81%	11.8%	19%	78.8%	4%	19.20	30%	2.46	22%	9.1%	93%
14			37%		93%		100%		24%		97%		79%		93%		88%		98%		18%	34%	63%		48%		48%	67%	
15	Sundale Colony	537	33%	26.08	48%	2.42	19%	6.04	56%	83.2%	4%	143.8	63%	13.75	96%	12.39	85%	10.83	59%	12.6%	8%	78.6%	0%	20.60	63%	2.56	41%	5.4%	59%
15			19%		93%		70%		27%		53%		60%		99%		97%		95%		21%	33%		87%		55%	29%		
16	Seville	394	15%	26.08	44%	2.51	70%	7.07	74%	90.0%	70%	146.1	15%	12.98	33%	11.84	41%	10.44	41%	10.0%	41%	83.7%	41%	19.68	33%	3.80	100%	5.3%	56%
16			12%		94%		92%		56%		95%		31%		88%		88%		90%		10%	77%	96%		71%		28%		
17	Fairholme Colony	769	56%	26.04	41%	2.47	48%	6.00	41%	89.8%	67%	145.8	19%	12.73	19%	11.72	22%	10.29	15%	9.8%	45%	84.0%	44%	22.00	89%	3.27	81%	5.6%	63%
17			32%		92%		86%		24%		95%		34%		81%		85%		84%		9%	81%	95%		95%		88%	30%	
18	Willow Creek Colony	1,256	78%	25.78	37%	2.46	37%	7.50	89%	87.0%	22%	145.4	33%	12.78	22%	11.78	26%	10.19	11%	11.1%	30%	83.2%	37%	17.90	4%	2.48	26%	7.9%	85%
18	West		45%		91%		83%		68%		81%		39%		82%		87%		80%		15%	73%		35%		49%	53%		
19	Royal Pork	1,153	70%	25.74	33%	2.50	63%	7.86	100%	91.5%	89%	143.2	78%	12.95	30%	11.51	11%	10.34	22%	10.5%	37%	81.2%	26%	18.11	11%	2.76	67%	5.8%	70%
19			41%		90%		93%		76%		98%		68%		86%		79%		85%		12%	54%		39%		69%	32%		
20	Willow Creek Colony	1,323	81%	25.62	30%	2.46	41%	6.50	63%	85.3%	7%	145.6	22%	13.34	78%	11.99	59%	10.17	7%	11.6%	22%	80.4%	19%	18.10	7%	2.30	4%	9.9%	100%
20	East		51%		89%		83%		40%		67%		37%		95%		91%		80%		17%	46%		38%		39%	73%		
21	Bacon Acres	2,381	100%	25.45	26%	2.46	44%	7.66	93%	88.5%	41%	144.2	48%	12.15	0%	11.27	0%	10.36	26%	8.5%	67%	87.4%	85%	18.59	19%	3.28	85%	4.7%	44%
21			74%		89%		84%		71%		89%		53%		50%		69%		86%		5%	96%		51%		89%	22%		
22	Grass River Colony	560	41%	25.37	22%	2.35	7%	7.17	81%	89.1%	52%	148.6	4%	13.14	56%	12.15	70%	10.67	52%	11.1%	26%	83.0%	33%	23.22	100%	2.70	59%	3.6%	26%
22			20%		88%		41%		58%		92%		15%		91%		95%		93%		15%	71%		98%		65%	15%		
23	Parkview Colony	1,207	74%	25.36	19%	2.41	15%	7.09	78%	86.5%	19%	144.9	37%	13.11	52%	11.92	56%	10.43	37%	12.0%	15%	79.8%	7%	18.99	26%	3.49	93%	4.4%	41%
23			43%		88%		63%		56%		78%		44%		91%		89%		91%		19%	41%		60%		94%	20%		
24	Springfield Hog Farm	536	30%	25.19	15%	2.45	26%	5.30	11%	86.5%	15%	143.1	82%	12.61	11%	11.91	52%	10.40	33%	12.2%	11%	82.2%	30%	19.80	37%	2.53	30%	6.0%	74%
24			19%		87%		80%		7%		77%		70%		77%		90%		89%		20%	63%		73%		52%	33%		
25	Willow Park Colony	336	4%	24.99	11%	2.32	0%	6.67	67%	88.4%	37%	144.5	45%	13.02	41%	11.79	30%	10.73	56%	9.4%	52%	81.2%	22%	21.48	81%	2.67	52%	3.0%	19%
25			8%		85%		32%		45%		88%		49%		89%		87%		94%		8%	53%		93%		62%	10%		
26	Hogs is Beautiful	1,594	96%	24.61	7%	2.45	33%	6.74	70%	85.5%	11%																		

13 Week - Sep 02, 2006 - Farm Rank (top number is Genesis - 28 Farms Rank/Percentile and bottom number is SMS Rank/Percentile out of 313 farms)

	Farm Name	Average Mated Female Inventory	Percentile	Pigs weaned / mated female / year	Percentile	Litters / mated female / year	Percentile	Wean 1st Service Interval	Percentile	Farrowing rate	Percentile	Farrowing interval	Percentile	Total born / litter	Percentile	Born live / litter	Percentile	Weaned / litter farrowed	Percentile	Pre-Weaning Mortality	Percentile	Pre-Weaning Survival	Percentile	Weaning age	Percentile	Average Parity	Percentile	Mated Female Death Loss	Percentile
1	Clearview Weanlings	1,398	85%	29.45	100%	2.64	100%	4.93	7%	95.1%	100%	140.9	100%	13.98	100%	12.61	89%	11.29	85%	9.0%	56%	83.7%	41%	19.19	22%	3.50	96%	4.6%	44%
1			54%		100%				99%		100%				100%		99%		99%		91%		75%		63%		94%		28%
2	Prairiehome Colony	446	22%	29.44	96%	2.48	48%	5.48	26%	89.6%	63%	145.7	15%	13.74	85%	12.70	96%	12.02	100%	6.8%	93%	89.1%	96%	24.29	100%	2.69	56%	6.3%	70%
2			15%		100%		83%		14%		93%		26%		98%		100%		100%		95%		97%		99%		67%		39%
3	Woodland Colony	933	63%	29.13	93%	2.49	52%	5.20	11%	88.7%	48%	142.1	89%	13.74	89%	12.61	93%	10.44	33%	8.0%	74%	86.1%	74%	17.60	0%	2.37	7%	9.0%	89%
3			36%		99%		84%		9%		87%		69%		98%		99%		88%		94%		93%		29%		43%		61%
4	Suncrest Colony	511	26%	28.79	89%	2.49	59%	6.00	33%	92.4%	93%	143.9	48%	13.45	70%	12.44	81%	11.47	93%	9.0%	52%	85.4%	59%	21.60	74%	2.71	63%	0.8%	0%
4			17%		99%		85%		25%		99%		48%		96%		98%		99%		91%		89%		92%		69%		10%
5	Evergreen Colony	684	48%	28.68	85%	2.49	56%	6.07	41%	91.2%	81%	143.2	67%	13.32	63%	12.24	74%	11.32	89%	6.6%	96%	88.2%	93%	20.68	52%	2.53	33%	2.9%	22%
5			28%		99%		85%		28%		97%		56%		96%		99%		99%		96%		96%		85%		54%		18%
6	Milltown Colony	732	52%	28.42	81%	2.48	41%	6.20	44%	88.5%	41%	144.1	41%	13.92	96%	12.60	85%	10.20	0%	10.9%	30%	82.6%	26%	20.50	44%	2.42	19%	2.7%	19%
6			29%		98%		80%		31%		86%		47%		99%		99%		79%		84%		63%		82%		48%		16%
7	Camrose	358	11%	28.26	78%	2.57	96%	6.69	59%	92.0%	89%	142.5	82%	13.06	41%	11.68	15%	10.84	56%	4.2%	100%	90.8%	100%	20.56	48%	2.56	37%	1.1%	4%
7			11%		98%		97%		48%		99%		65%		88%		82%		94%		97%		100%		83%		57%		11%
8	Bluegrass Colony	564	41%	28.22	74%	2.54	81%	5.37	22%	89.5%	59%	141.9	93%	13.28	59%	12.44	78%	11.19	81%	8.6%	70%	86.6%	85%	20.49	41%	3.03	78%	2.1%	7%
8			21%		98%		94%		13%		98%		73%		94%		98%		98%		94%		81%		82%		81%		13%
9	O K Colony	581	44%	28.14	70%	2.54	78%	6.92	74%	88.9%	52%	145.1	33%	13.71	81%	12.09	52%	11.10	78%	7.0%	89%	85.3%	56%	21.99	78%	2.38	11%	6.2%	67%
9			22%		97%		93%		55%		88%		35%		97%		93%		98%		95%		89%		93%		45%		38%
10	Fairhaven Colony	350	7%	27.97	67%	2.37	19%	4.50	0%	91.2%	78%	145.6	19%	13.83	93%	12.93	100%	11.85	96%	8.7%	67%	86.0%	70%	23.28	96%	2.39	15%	3.4%	30%
10			11%		97%		50%		6%		97%		27%		99%		100%		100%		92%		92%		98%		46%		22%
11	Brentwood East	1,504	93%	27.22	63%	2.42	30%	6.50	52%	86.4%	19%	143.1	70%	13.09	44%	11.78	30%	11.07	74%	7.6%	78%	85.6%	63%	21.40	67%	3.46	89%	7.2%	78%
11			58%		96%		68%		42%		74%		59%		88%		85%		97%		94%		90%		90%		93%		46%
12	Elm Spring Colony	406	19%	26.79	59%	2.57	89%	4.82	4%	87.0%	30%	145.1	37%	12.68	7%	11.52	7%	10.55	37%	9.1%	48%	85.6%	67%	22.65	85%	2.88	70%	5.9%	59%
12			13%		95%		96%		6%		78%		35%		75%		77%		90%		91%		90%		77%		70%		38%
13	Seville	396	15%	26.56	56%	2.52	74%	6.70	67%	90.9%	74%	147.7	0%	12.90	19%	11.75	22%	10.71	52%	8.8%	63%	85.2%	52%	19.97	30%	3.80	100%	5.1%	56%
13			13%		94%		91%		49%		96%		17%		82%		83%		93%		92%		88%		76%		97%		32%
14	Glidden Colony	314	0%	26.48	52%	2.38	22%	5.24	19%	87.7%	37%	143.3	59%	13.36	67%	12.17	59%	11.01	67%	7.3%	85%	86.4%	78%	21.58	70%	2.60	44%	2.6%	15%
14			10%		94%		52%		10%		82%		54%		95%		94%		96%		95%		93%		92%		62%		14%
15	Bacon Acres	2,376	100%	26.39	48%	2.57	93%	6.40	48%	90.3%	67%	143.3	63%	12.22	0%	11.29	0%	10.30	11%	8.8%	59%	86.6%	81%	18.25	15%	3.28	85%	7.3%	81%
15			72%		93%		40%		9%		95%		55%		50%		65%		83%		92%		94%		42%		90%		47%
16	Willow Creek Colony	1,288	78%	26.29	44%	2.45	37%	7.30	85%	86.2%	15%	145.4	30%	12.91	22%	11.92	41%	10.31	15%	10.1%	33%	84.2%	44%	17.70	7%	2.48	26%	5.0%	52%
16			48%		92%		72%		64%		73%		30%		83%		89%		83%		87%		81%		32%		50%		31%
17	Willow Park Colony	341	4%	26.27	41%	2.37	15%	7.24	81%	86.6%	22%	145.5	22%	12.96	26%	11.99	48%	10.84	59%	9.8%	41%	82.7%	30%	23.15	93%	2.67	52%	3.5%	33%
17			10%		92%		47%		63%		77%		28%		85%		92%		94%		88%		64%		98%		65%		22%
18	Parkview Colony	1,208	74%	26.26	37%	2.34	4%	6.99	78%	83.1%	7%	146.0	8%	13.60	74%	12.15	56%	10.64	48%	11.4%	19%	79.2%	11%	19.88	26%	3.49	93%	4.6%	48%
18			43%		91%		40%		56%		51%		24%		97%		94%		92%		92%		82%		39%		75%		29%
19	Sundale Colony	530	30%	26.26	33%	2.51	67%	6.65	56%	82.8%	4%	142.6	78%	13.64	78%	12.23	70%	10.60	44%	13.3%	4%	77.2%	0%	20.70	56%	2.56	41%	3.0%	26%
19			18%		91%		88%		46%		49%		64%		97%		96%		92%		75%		29%		85%		58%		19%
20	Springfield Hog Farm	545	33%	26.25	30%	2.44	33%	5.20	11%	88.5%	44%	144.0	45%	12.87	11%	12.19	63%	10.90	63%	9.7%	45%	85.0%	48%	20.00	33%	2.53	30%	4.4%	37%
20			20%		91%		69%		9%		87%		48%		81%		95%		95%		89%		87%		77%		54%		27%
21	Royal Pork	1,157	70%	26.08	26%	2.55	85%	7.99	100%	94.1%	96%	143.0	74%	12.96	30%	11.50	4%	10.31	19%	11.2%	22%	80.1%	19%	17.96	11%	2.76	67%	9.0%	85%
21			40%		90%		95%		76%		99%		60%		85%		76%		83%		83%		47%		38%		72%		61%
22	Willow Creek Colony East	1,366	81%	25.61	22%	2.48	44%	7.70	93%	87.6%	33%	143.5	56%	13.27	56%	11.87	37%	10.24	4%	12.0%	11%	79.9%	15%	17.60	0%	2.30	4%	10.3%	96%
22			53%		88%		81%		71%		81%		52%		93%		89%		80%		78%		44%		29%		41%		74%
23	Hogs is Beautiful	1,600	96%	25.50	19%	2.51	70%	6.78	70%	86.9%	26%	143.6	52%	12.88	15%	11.84	33%	10.40	30%	11.7%	15%	82.9%	33%	18.50	19%	2.62	48%	6.0%	63%
23			61%		87%		90%		51%		78%		51%		82%		88%		86%		80%		67%		47%		63%		38%
24	Clear Water Farms	859	59%	25.44	15%	2.42	26%	7.60	89%	91.7%	85%	145.4	30%	12.65	4%	11.70	19%	10.60	41%	7.5%	82%	88.0%	89%	20.70	56%	2.06	0%	9.3%	93%
24			34%		86%		67%		70%		98%		30%		74%		83%		91%		95%		96%		85%		32%		64%
25	Fairholme Colony	795	56%	25.02	11%	2.35	7%	6.00	33%	89.4%	56%	145.8	11%	13.10	48%	11.97	44%	10.29	7%	10.0%	37%	83.2%	37%	22.30	81%	3.27	81%	4.5%	41%
25			32%		80%		42%		25%		91%		25%		88%		91%		83%		88%		70%						



System Benchmarking Charts - 52 Weeks - Sep 02, 2006

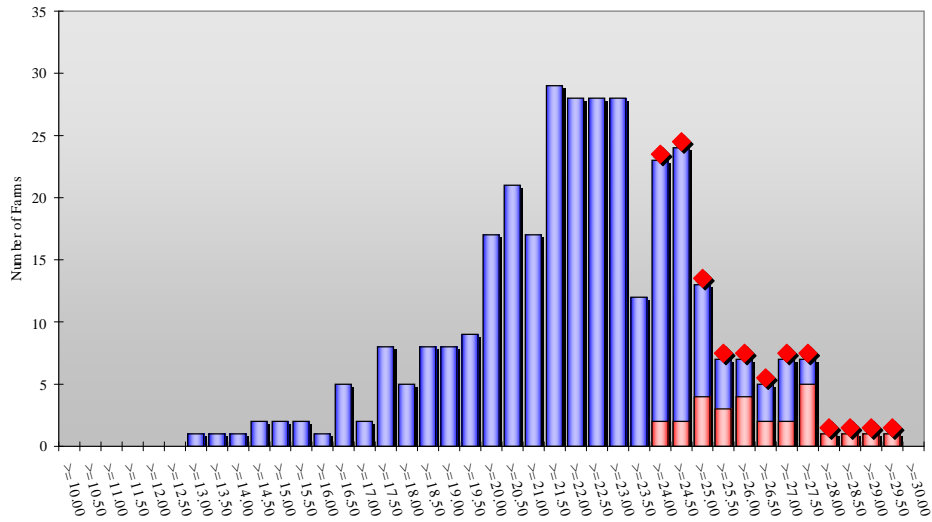
339 Farms and 612,722 Females

Swine Management Services, LLC
 1044 W. 23rd St. - Suite B Fremont, NE 68025
 Tel: (402) 727-6600 Fax: (402) 727-7270
www.swinems.com

Pigs Weaned / Mated Female / Year

SMS Benchmark (average top 50%)	24.07	SMS Average	22.29
Genesus (average top 50%)	27.52	Average	26.19

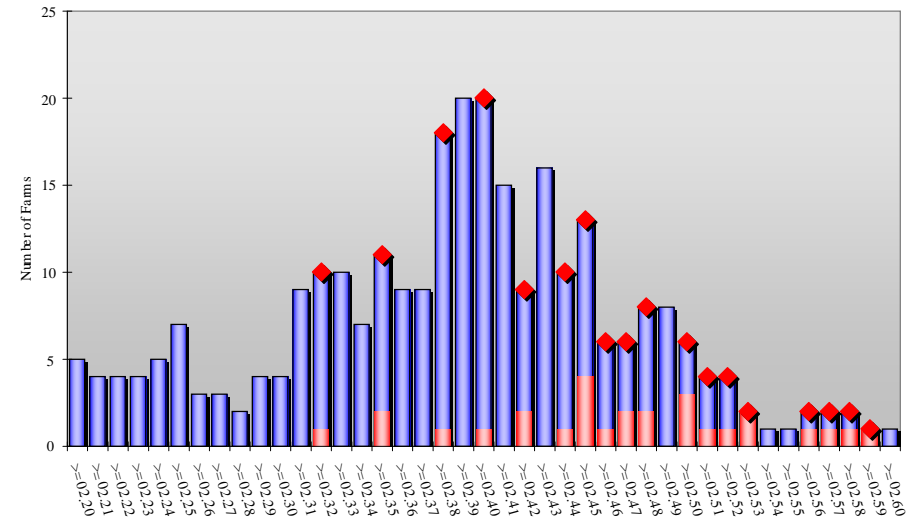
Red diamond are your farms, red columns are the number of your farms in each column



Litters / Mated Female / Year

SMS Benchmark (average top 50%)	2.42	SMS Average	2.36
Genesus (average top 50%)	2.52	Average	2.47

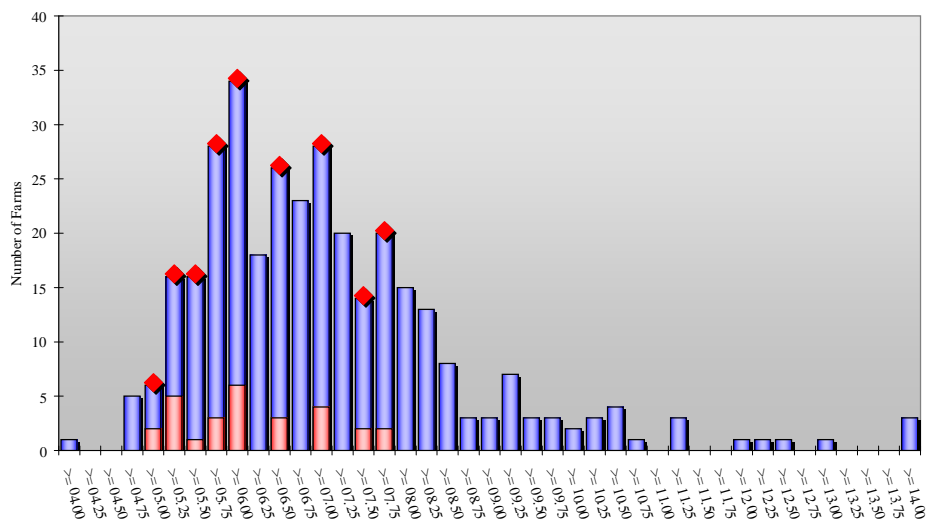
Red diamond are your farms, red columns are the number of your farms in each column



Wean to 1st Service Interval

SMS Benchmark (average top 50%)	6.64	SMS Average	6.93
Genesus (average top 50%)	5.79	Average	6.44

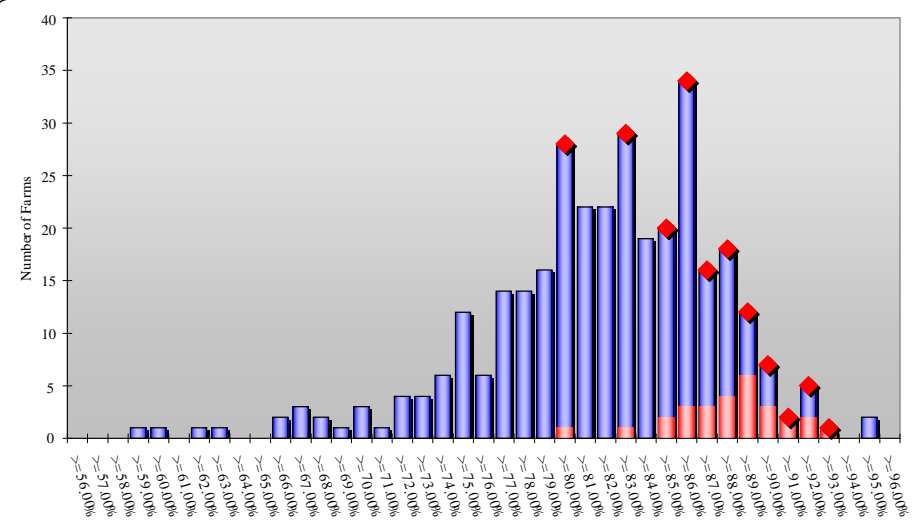
Red diamond are your farms, red columns are the number of your farms in each column



Farrowing Rate

SMS Benchmark (average top 50%)	84.8%	SMS Average	82.3%
Genesus (average top 50%)	89.9%	Average	88.1%

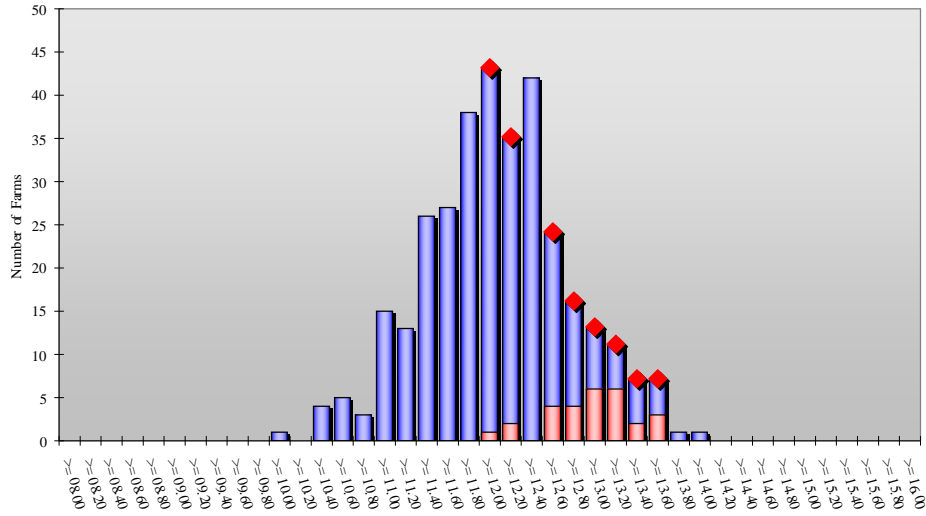
Red diamond are your farms, red columns are the number of your farms in each column



Total Born / Litter

SMS Benchmark (average top 50%) 12.34 SMS Average 12.10
 Genesus (average top 50%) 13.26 Average 12.97

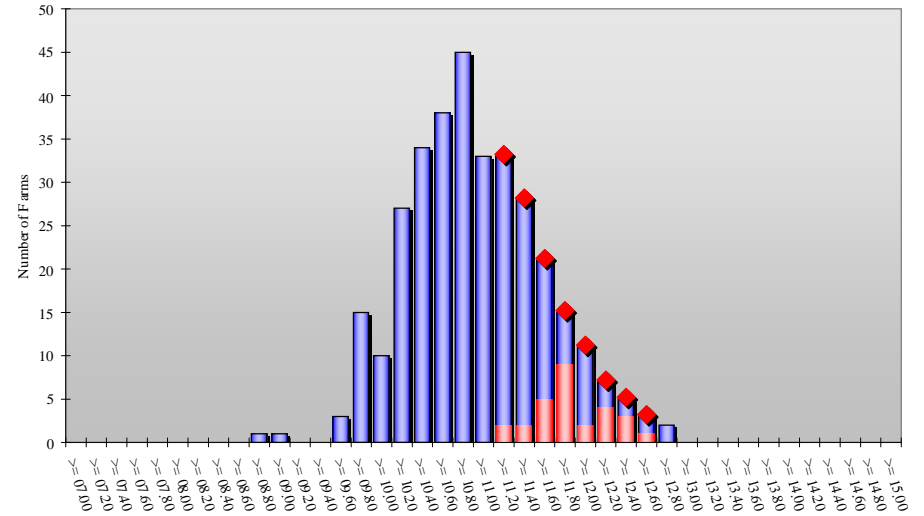
Red diamond are your farms, red columns are the number of your farms in each column



Born Live / Litter

SMS Benchmark (average top 50%) 11.28 SMS Average 10.96
 Genesus (average top 50%) 12.12 Average 11.88

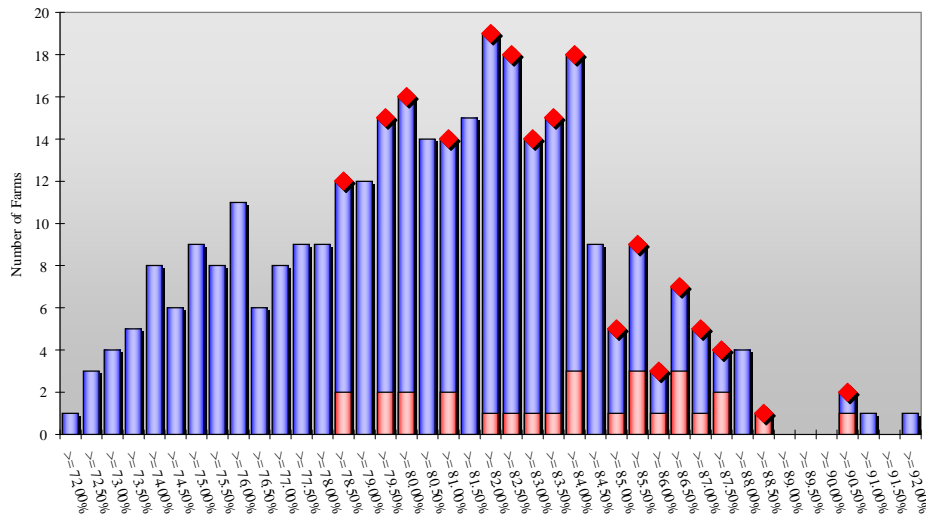
Red diamond are your farms, red columns are the number of your farms in each column



Piglet Survival

SMS Benchmark (average top 50%) 82.4% SMS Average 79.8%
 Genesus (average top 50%) 85.1% Average 83.9%

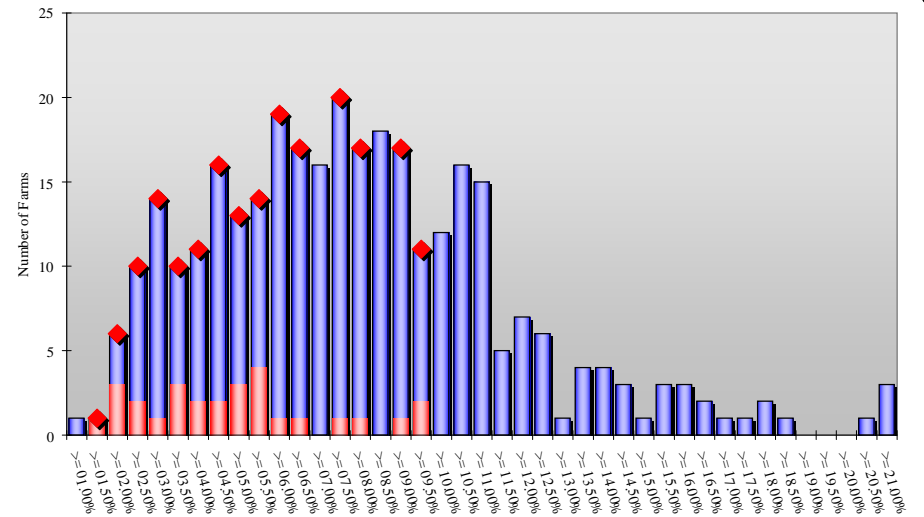
Red diamond are your farms, red columns are the number of your farms in each column



Mated Female Death Loss

SMS Benchmark (average top 50%) 8.1% SMS Average 9.1%
 Genesus (average top 50%) 4.7% Average 5.7%

Red diamond are your farms, red columns are the number of your farms in each column





System Benchmarking Charts - 13 weeks - Sep 02, 2006

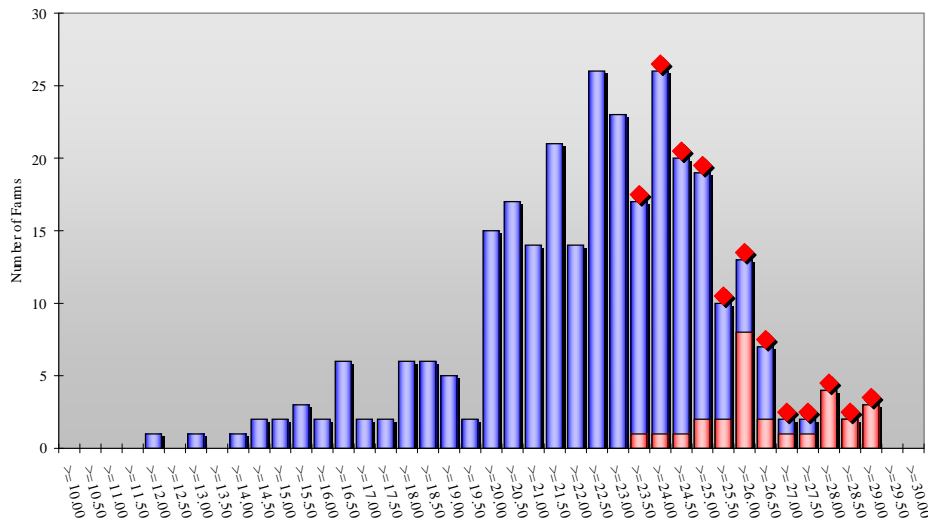
312 Farms and 557,997 Females

Swine Management Services, LLC
 1044 W. 23rd St. - Suite B Fremont, NE 68025
 Tel: (402) 727-6600 Fax: (402) 727-7270
 www.swinems.com

Pigs Weaned / Mated Female / Year

SMS Benchmark (average top 50%)	24.75	SMS Average	22.67
Genesus (average top 50%)	28.27	Average	26.66

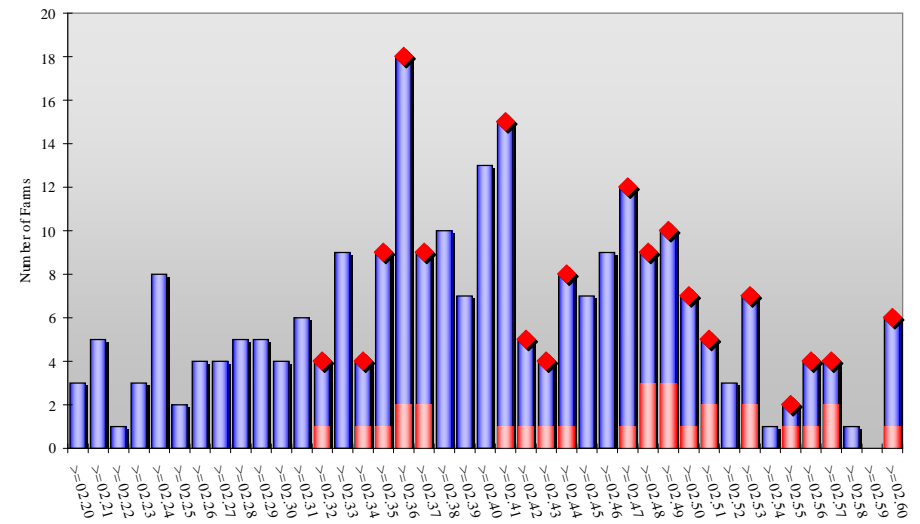
Red diamond are your farms, red columns are the number of your farms in each column



Litters / Mated Female / Year

SMS Benchmark (average top 50%)	2.43	SMS Average	2.36
Genesus (average top 50%)	2.51	Average	2.48

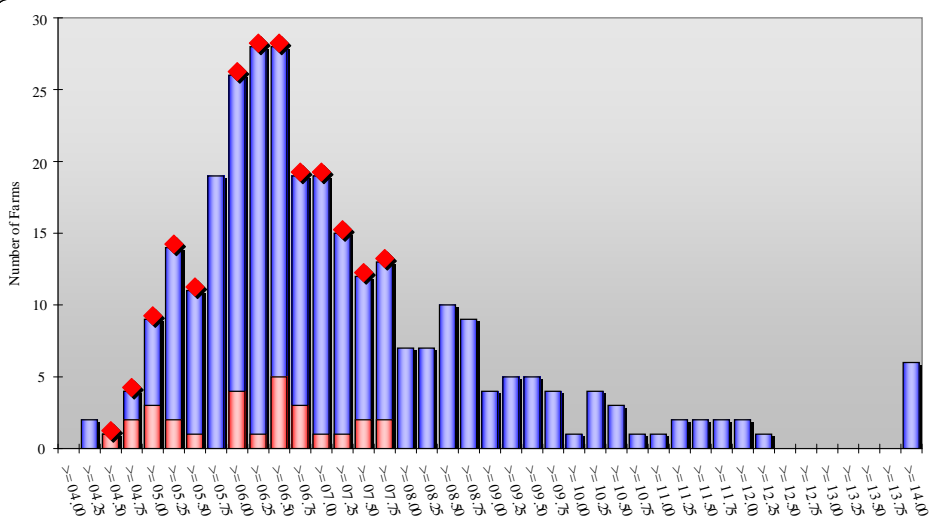
Red diamond are your farms, red columns are the number of your farms in each column



Wean to 1st Service Interval

SMS Benchmark (average top 50%)	6.75	SMS Average	7.29
Genesus (average top 50%)	5.77	Average	6.43

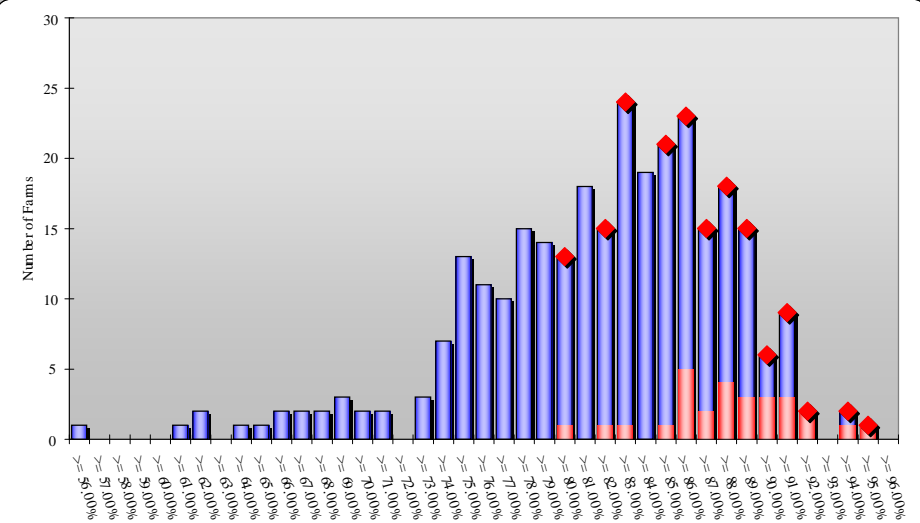
Red diamond are your farms, red columns are the number of your farms in each column



Farrowing Rate

SMS Benchmark (average top 50%)	85.5%	SMS Average	82.4%
Genesus (average top 50%)	90.0%	Average	88.5%

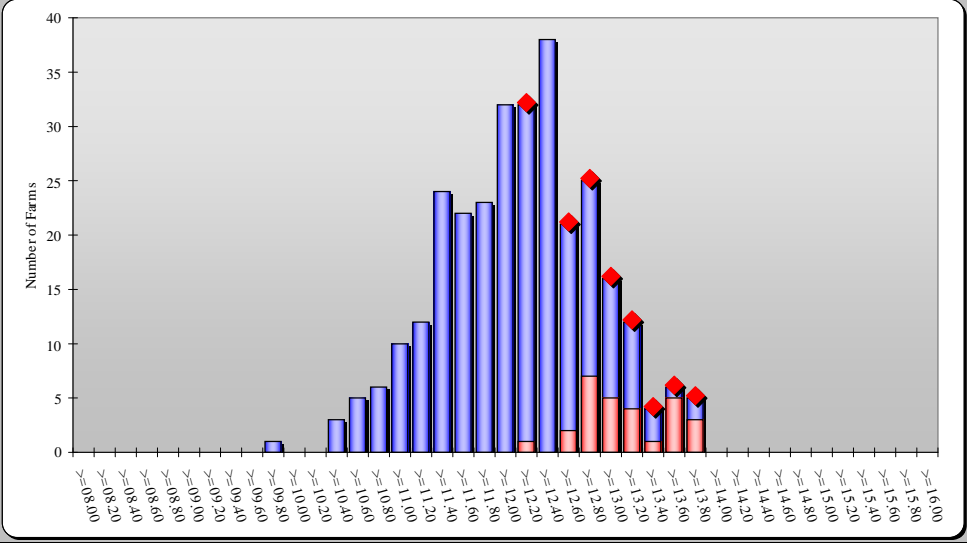
Red diamond are your farms, red columns are the number of your farms in each column



Total Born / Litter

SMS Benchmark (average top 50%) 12.54 SMS Average 12.20
 Genesus (average top 50%) 13.49 Average 13.15

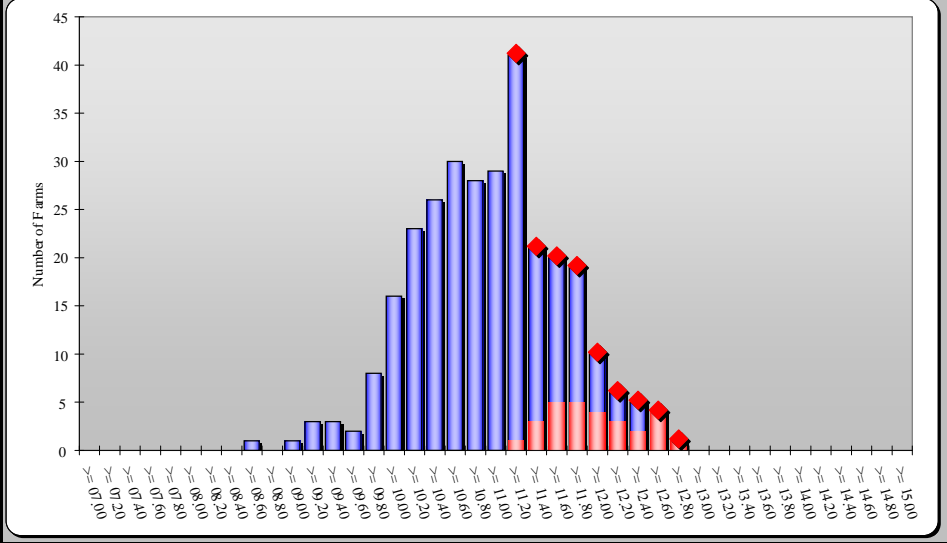
Red diamond are your farms, red columns are the number of your farms in each column



Born Live / Litter

SMS Benchmark (average top 50%) 11.43 SMS Average 11.05
 Genesus (average top 50%) 12.27 Average 11.98

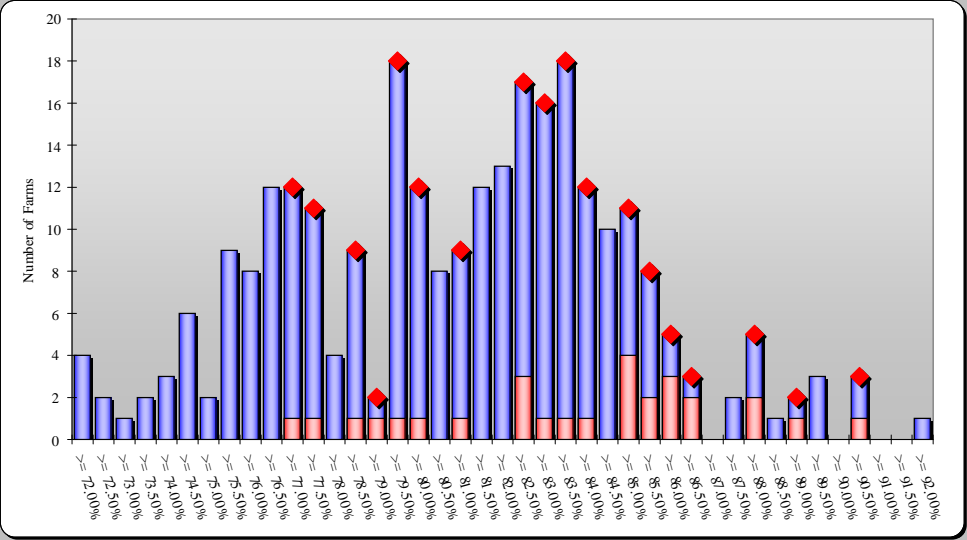
Red diamond are your farms, red columns are the number of your farms in each column



Piglet Survival

SMS Benchmark (average top 50%) 81.9% SMS Average 80.0%
 Genesus (average top 50%) 85.7% Average 83.5%

Red diamond are your farms, red columns are the number of your farms in each column



Mated Female Death Loss

SMS Benchmark (average top 50%) 8.2% SMS Average 9.4%
 Genesus (average top 50%) 4.9% Average 6.1%

Red diamond are your farms, red columns are the number of your farms in each column

